

ROOM CAPACITIES

| | GRAND BALLROOM WITH SOLARIUM | SOLARIUM | ST. MICHAEL | GAZEBO | EXECUTIVE | LELAND | ROSEBERRY | ROSSLYN | COMMERCIAL | RIVIERA | CROWNE SUITE |
|------------------------------|---|-----------|--|-----------|--|--|--|--|----------------------------|------------|--------------|
| SIZE | | | | | | | | | | | |
| SQUARE FOOTAGE | 3240 | 1680 | 2280 | 441 | 851 | 945 | 684 | 648 | 1850 | 414 | 1300 |
| SPACE | 72' x 45' | 48' x 35' | 60' x 38' | 21' x 21' | 37' x 23' | 35' x 27' | 36.5' x 19' | 36' x 18' | 50' x 37' | 23' x 18' | 36' X 36' |
| HEIGHT | 13' | 13' | 11' | 12.5' | 9.5' | 11' | 9.6' | 9.6' | 8.5' | 9' | 13' |
| DANCE FLOOR | 27' x 24' | - | 37' x 31' | - | - | - | - | - | - | - | - |
| CAPACITY BASED ON SET-UP | | | | | | | | | | | |
| THEATRE | 340 | 90 | 140 | 200+ | 56 | 64 | 50 | 30 | 50-70 | - | 50-70 |
| BOARDROOM | - | - | - | - | 26 | 26 | 20-26 | 20 | 28 | 10-12 | 20 |
| CLASSROOM | 2/8ft. 84, 3/8ft. 126, 4/8ft. 168 (max 42 tables) | 80 | 2/6ft. 40, 3/8ft. 60, 4/8ft. 80, (max 20 tables) | - | 44 | 44 | 34 | 24 | 40-68 | - | 24 |
| HOLLOW SQUARE | 80 | 30 | 50 | - | 28 | 28 | - | - | - | - | - |
| HALF MOON | 150 (6 pax per table) | 30 | 75 (5 max per table), 90 (6 max per table) | - | 25 (5 max per table), 30 (6 max per table) | 25 (5 max per table), 30 (6 max per table) | 25 (5 max per table), 30 (6 max per table) | 20 (5 max per table), 24 (6 max per table) | 30 (5 max per table) | - | - |
| U-SHAPE | 70 | 30 | 50 | - | 30 | 30 | 30 | 20 | 20 | - | - |
| PLATED DINNER | 240 | 60 | 120 | - | 50 | 50 | 40 | 32-40 | 72 | - | 35 |
| PLATED DINNER & DANCE ROUNDS | 200 | 60 | 120 | - | - | - | - | - | 72 | - | - |
| BUFFET DINNER & DANCE ROUNDS | 200 | 60 | 120 | - | - | - | - | - | 72 | - | - |
| RECEPTION (STANDING) | 400 | 100 | 200 | - | 60 | 70 | 50 | 30 | 100 | - | 80 |
| CUSTOM RECTANGLE | 300 | 50-80 | 160 | - | - | - | - | - | - | - | - |
| SMARTBOARD | - | - | - | - | - | Smartboard | Smartboard | Smartboard | - | Whiteboard | - |
| FLOOR LEVEL | 3 (main) | 3 (main) | 4 | Outside | 4 | 4 | 2 | 2 | 1 | 2 | 3 (Hotel) |

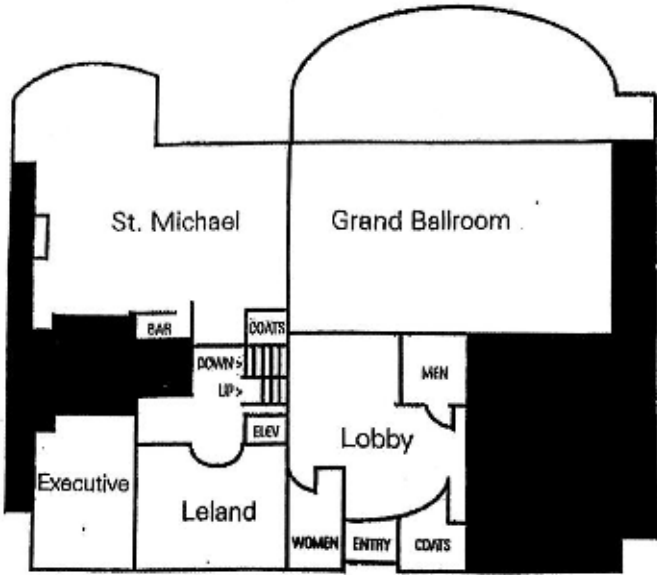
NOTE:

The Grand Ballroom and Commercial rooms have pillars in them.

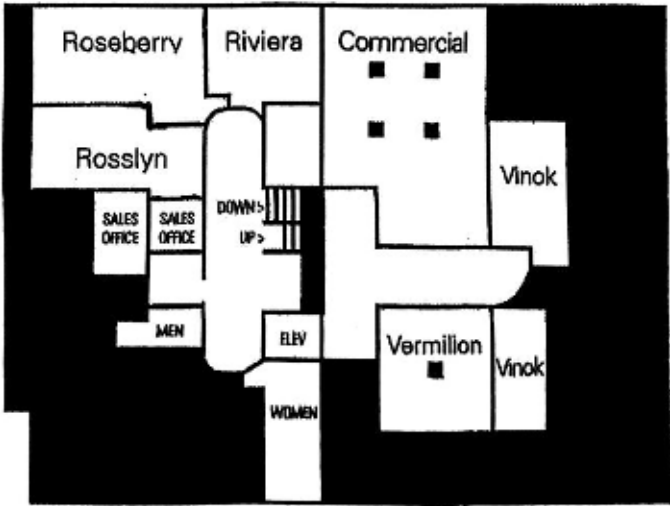
All rooms have complimentary Wi-Fi



ROOM LAYOUT



Main Floor — Level 3
Upper Floor — Level 4



Lower Floor — Level 2
Bottom Floor — Level 1